

CONCEPT PRESENTATION

JOB NO. 190307
THE MUSEUM – TOBRUK DRIVE

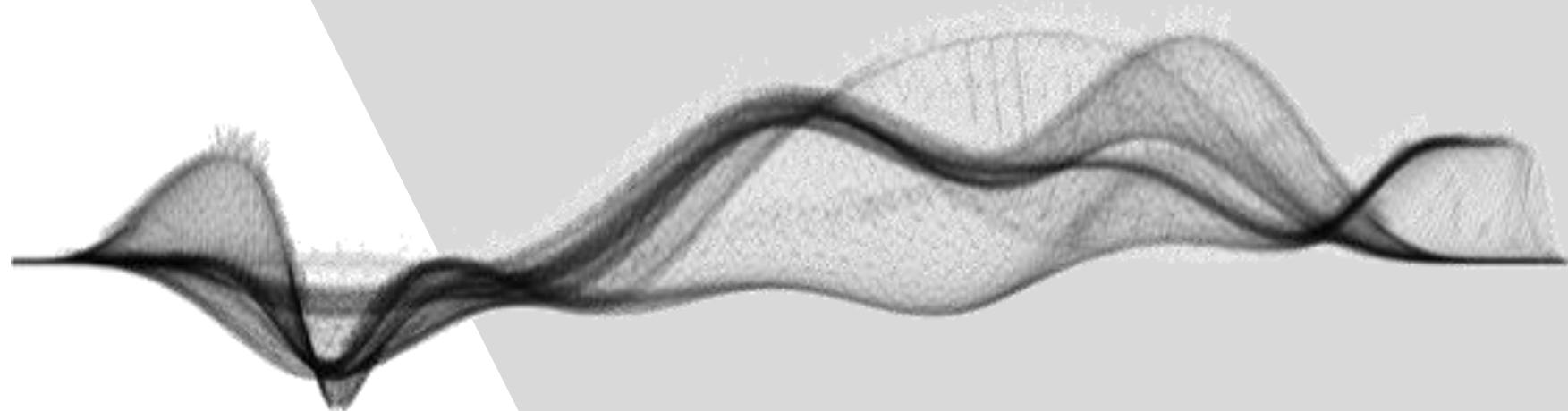
DATE: 19th March 2019

*"Emerging from the earth,
the sky and the water, a
place to uplift and inspire."*



ASPECT

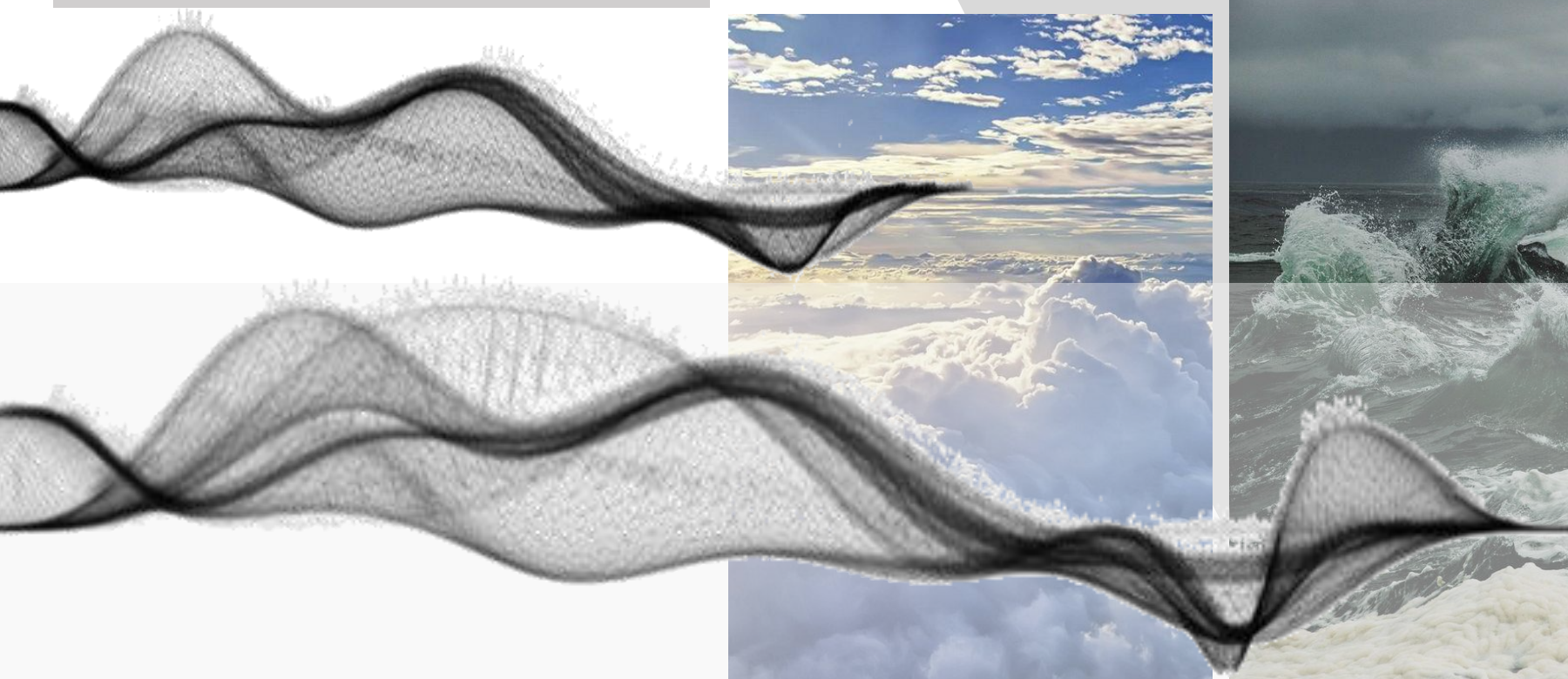
ARCHITECTURE
INTERIORS
PROJECT MANAGEMENT



CONCEPT – DEVELOPING THE FORMS



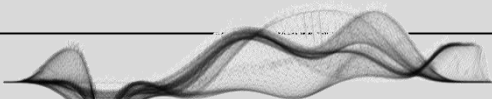
Creating an Architectural form that encompasses all facets that form the military core. The Folding “ribbon” symbolises these facets - the AIR, the LAND and the SEA. The organic idea is free flowing and crafted to suit the landscape and the accommodation requirements, capturing the topography and the views. The internal and external designs create a journey through places of discovery and reflection. The architecture aims at creating a world class facility where veterans can prepare for civilian life and where the general public can honour and pay tribute to their individual contributions.



CONCEPT – ARCHITECTURAL FORM



Sitting flush with the landscape, the overall building form will undulate across the site, capturing the views and emulating the surrounding landscape. The main entrance will pop up and create a focal point defining the start of the journey through the building and exhibition areas. Views will be captured by the architecture with a merging of all the elements to enhance the experience.

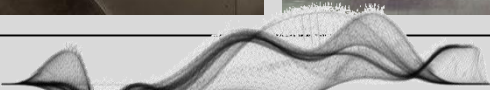
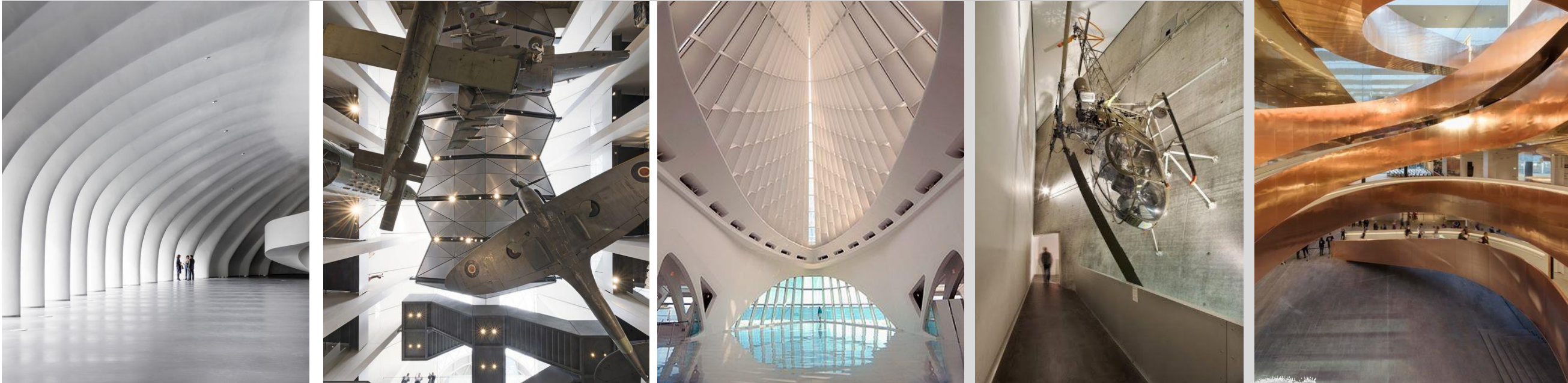




CONCEPT – INTERNAL FORM- THE GREAT HALL



The great hall defines the start of the journey through the building, it anchors the complex as a focal point for circulation and gathering. Glimpses of the sky and views are framed by the architecture. Generous volumes allow for large scale exhibitions; suspended from the ceiling or floor mounted. A series of ramps and pathways define the journey, a pre-planned route that highlights the best possible experience through the spaces and exhibitions.



CONCEPT – INTERNAL FORM - DISPLAY EXPERIENCE

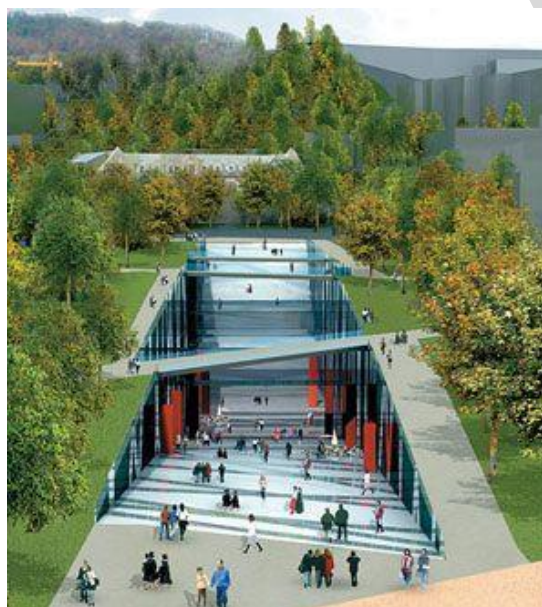
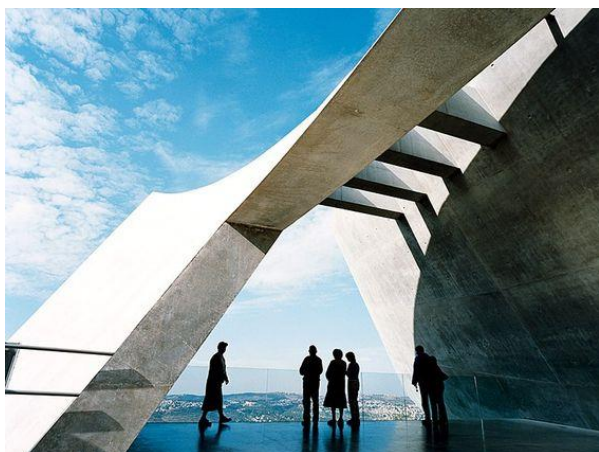


Through the overall journey, the architecture will define smaller exhibition areas and gathering spaces. Scale, volume and light will create intimate focal points.

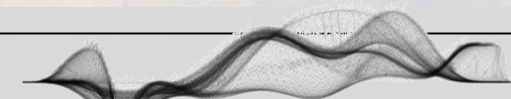




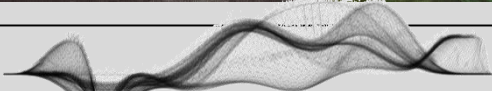
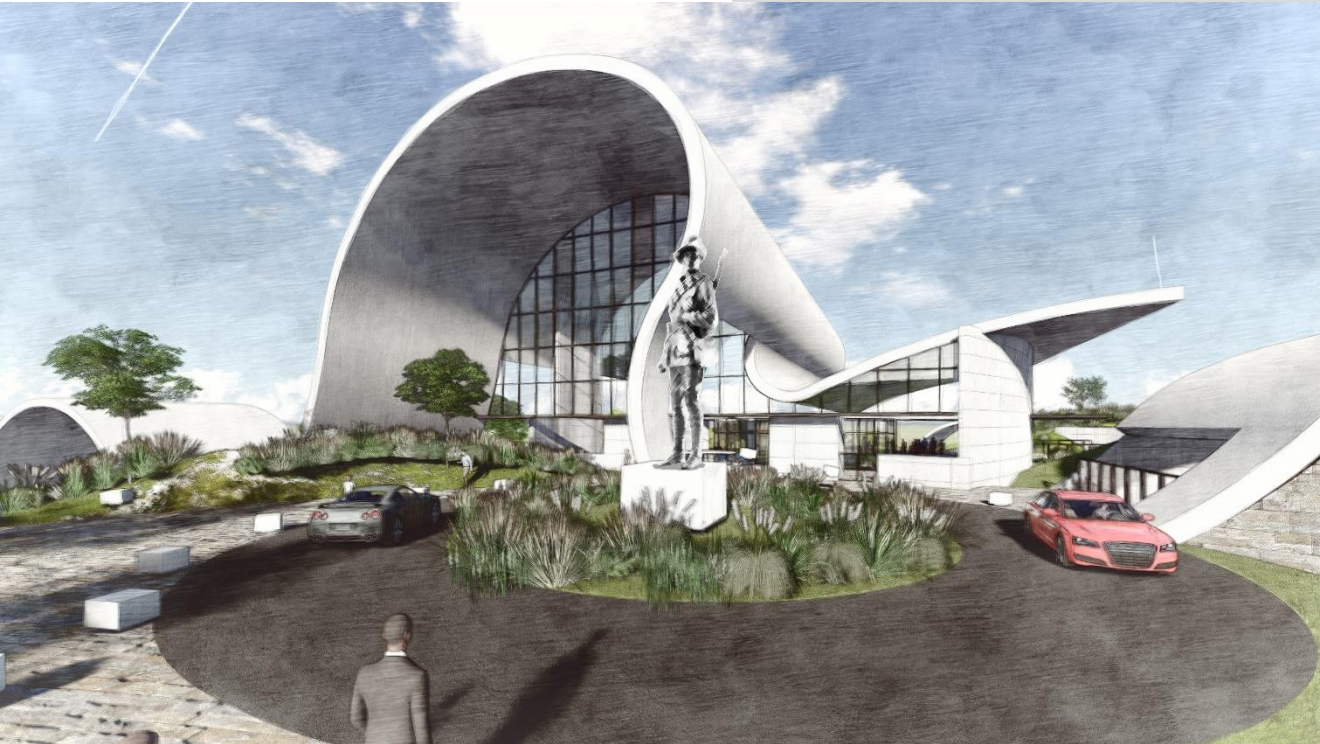
CONCEPT - EXTERNAL EXPERIENCE



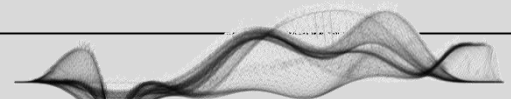
The overriding concept links the landscape and the architecture – the internal and external experiences being of equal importance.



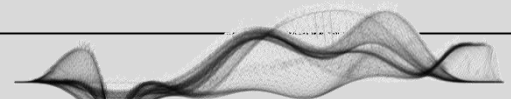
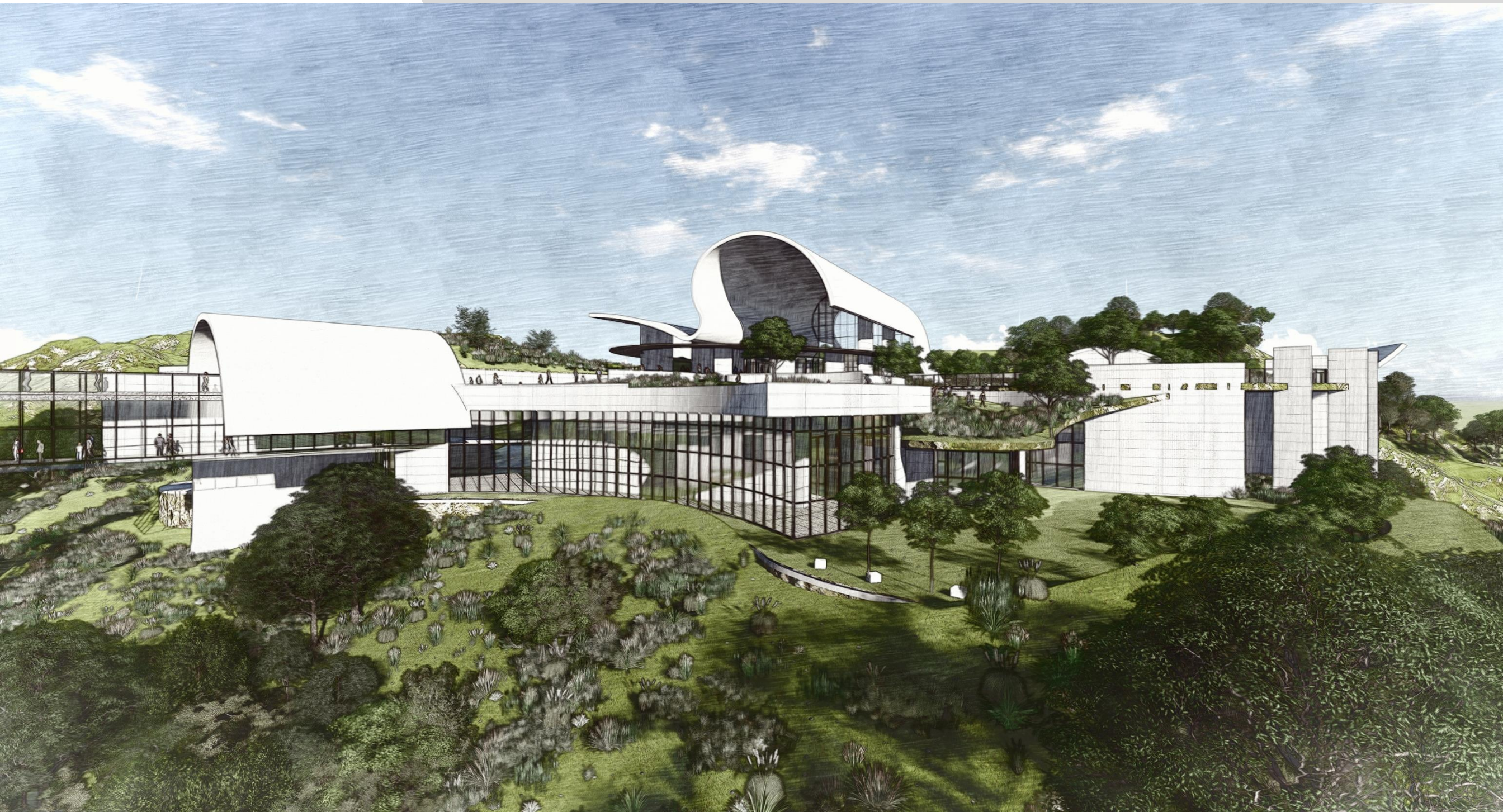
CONCEPT – EXTERNAL PERSPECTIVES



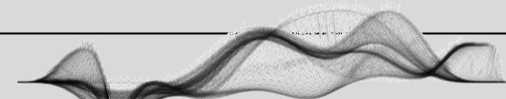
CONCEPT – EXTERNAL PERSPECTIVES



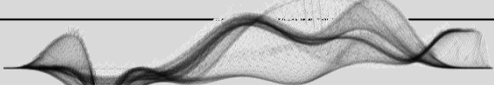
CONCEPT – EXTERNAL PERSPECTIVES



CONCEPT - EXTERNAL PERSPECTIVES



CONCEPT – EXTERNAL PERSPECTIVES



CONCEPT - PLANS



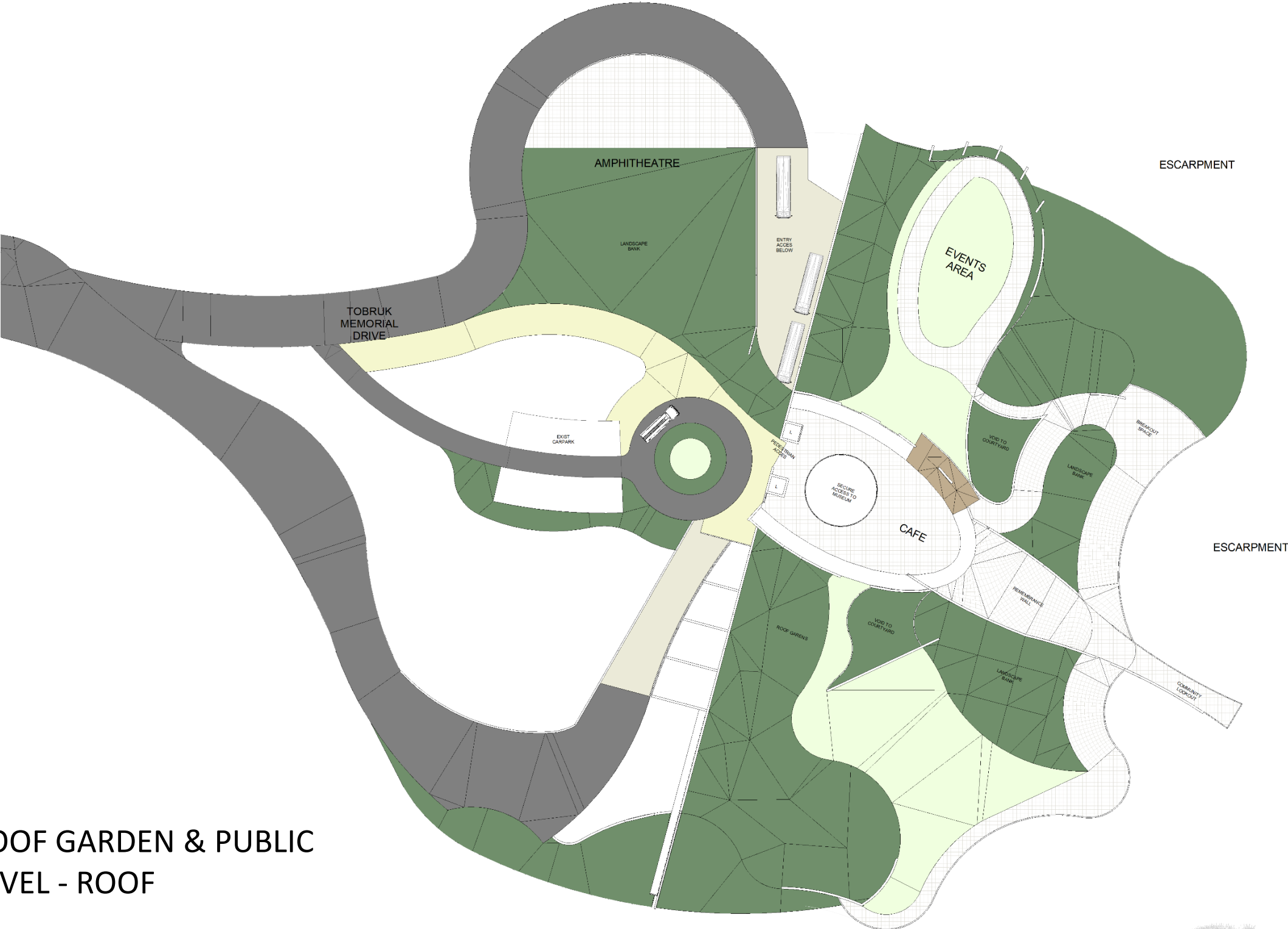
MAIN ACCESS LEVEL –
LOWER GROUND

CONCEPT - PLANS



MAIN GALLERY LEVEL-
GROUND

CONCEPT - PLANS



ROOF GARDEN & PUBLIC
LEVEL - ROOF

